

A vintage outdoor sink with a wooden top and a metal basin, featuring a silver faucet and a green hose. Above the sink is a large, ornate, rectangular mirror with a dark, distressed frame, reflecting the surrounding greenery. The entire setup is positioned in front of a dense wall of tall, green, spiky plants, possibly yucca or agave, with a dark wooden window frame visible behind the mirror.

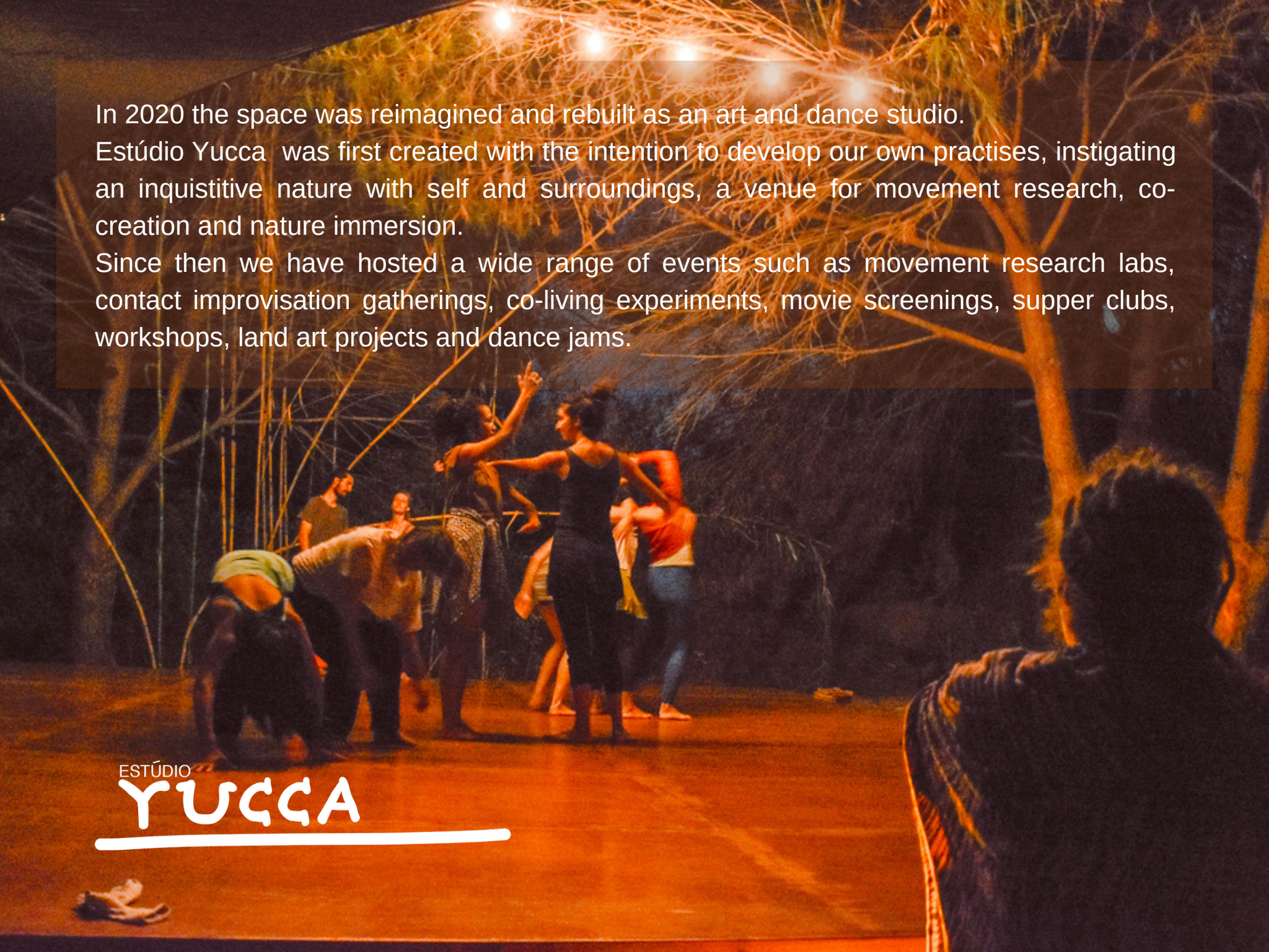
ESTÚDIO

YUCCA

ART AND DANCE STUDIOS




We consider ESTÚDIO YUCCA as a multi-purpose art space. An embryo project, living on experiments and sustained acts to achieve a sense of art, community and creativity. Just meters from the north atlantic ocean in the eastern point of the Algarve, Portugal, this space first originated as a pottery studio creating traditional Portuguese handmade tiles.



In 2020 the space was reimagined and rebuilt as an art and dance studio. Estúdio Yucca was first created with the intention to develop our own practises, instigating an inquisitive nature with self and surroundings, a venue for movement research, co-creation and nature immersion. Since then we have hosted a wide range of events such as movement research labs, contact improvisation gatherings, co-living experiments, movie screenings, supper clubs, workshops, land art projects and dance jams.

ESTÚDIO
YUCCA

A man and a woman are posing on a grassy ridge that runs diagonally across the frame. The man is standing behind the woman, who is crouching. They are both looking towards the camera. The background is a large body of water with a vibrant pink hue, reflecting the sky and the surrounding landscape. The water's surface shows some ripples and reflections. In the distance, there are some structures and more land.

Co-founder Tom Leamon
British Painter and Creator
www.tomleamon.com
instagram - tom_leamon

Co-founder Bárbara Ramos
Dancer and Studio Producer
instagram - barbarelous

ESTÚDIO
YUCCA

ESTÚDIO

YUCCA

Main house and garden



Onsite Facilities

Main house (200m²) with large mature gardens

Outdoor wood dance floor (80m²)

Camping area (0,3 ha)

Indoor art studio (100m²)

Outdoor kitchen

Outdoor showers and compost toilet

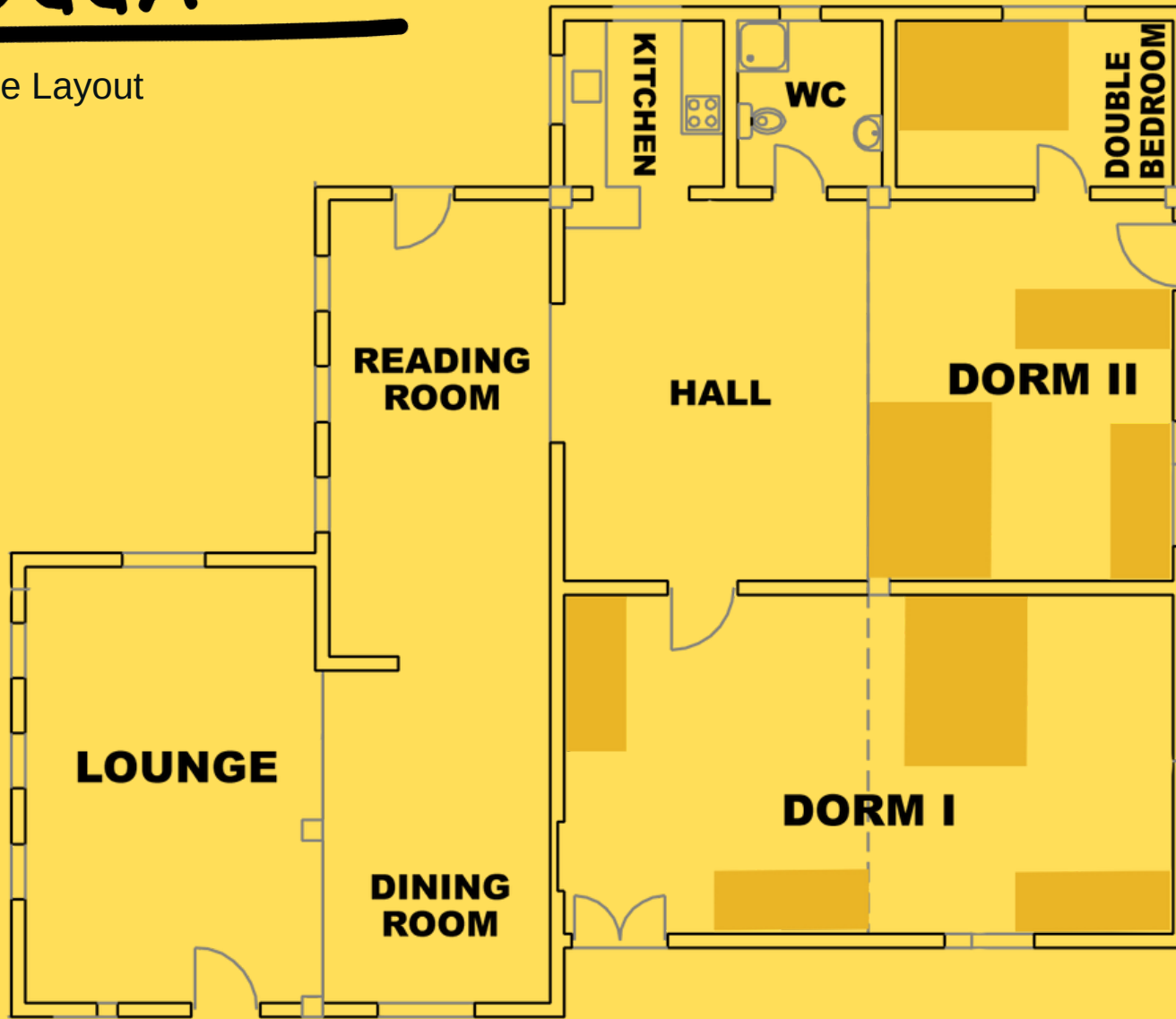
Private access to Ria Formosa



ESTÚDIO

YUCCA

Main house Layout





Lodging

The main house (**Monte Azul**) can accommodate up to 11 people within double and single beds distributed between two dorms and a private bedroom.

For the nature lovers we have a camping area with a bell tent that sleeps up to 4 people, where you can also pitch a tent or bring your own campervan. With access to the studio lounge area, outdoor kitchen, showers and compost toilet.



A white dog stands in a field of dry grass and tall reeds. In the background, a large, light-colored tent is pitched among green bushes. The sky is blue with scattered white clouds. The overall scene is a peaceful outdoor camping area.

ESTÚDIO
YUCCA

Camping Area

ESTÚDIO

YUCCA

Outdoor Dining Area



ESTÚDIO
YUCCA

Outdoor Kitchen





ESTÚDIO
YUCCA

When it comes to catering for your event we work with a number of national and international chefs and catering companies who can create a bespoke dining experience for all your needs using locally sourced produce.



ESTÚDIO

YUCCA

Outdoor Dancefloor

ESTÚDIO
YUCCA



Art studio Lounge



ESTÚDIO
YUCCA

Location: 5 minutes from Conceição train station and 10 minutes away from Tavira (by car), and a 10 minute walk from Cabanas de Tavira. With private access to the Ria Formosa and beach.



ESTÚDIO
YUCCA

Ria Formosa



ESTÚDIO
YUCCA

If you would like more information regarding prices and availability for booking the space
please email us
estudio.yucca@gmail.com